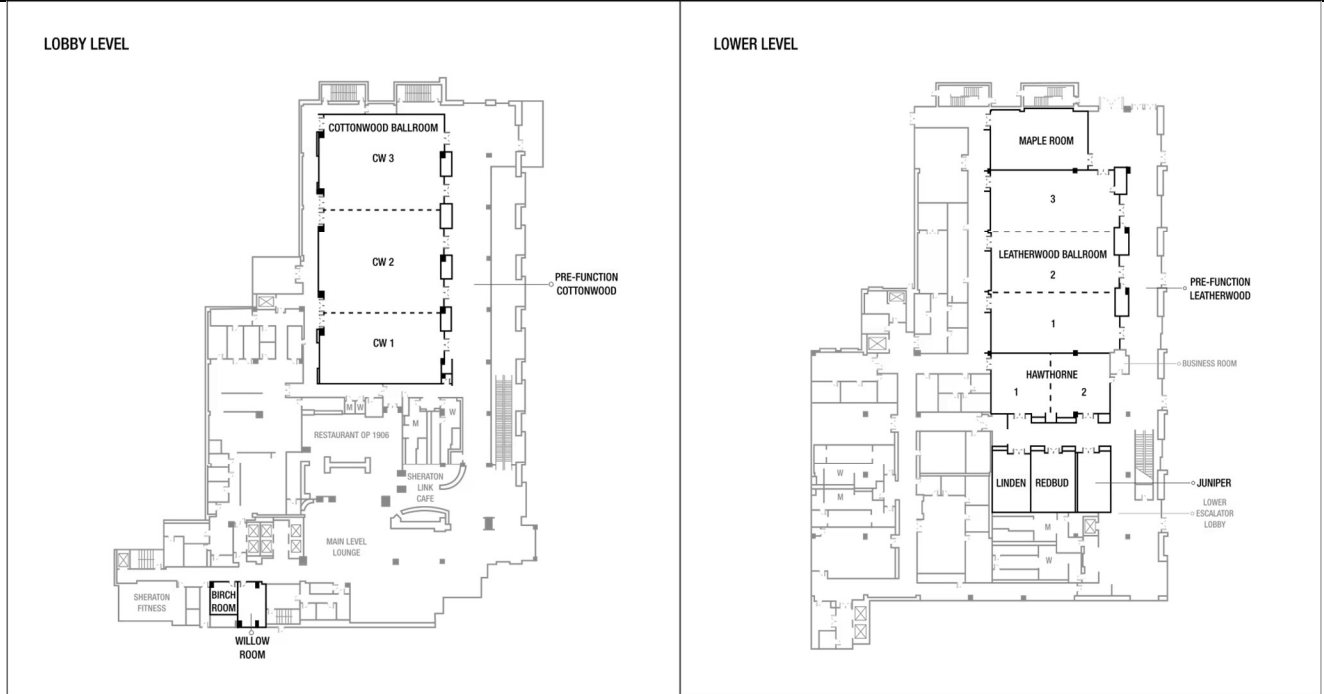


# National Radiological Emergency Preparedness Conference, Inc.

PO Box 166, Landing, NJ 07850 ♦ Ph: 973-960-6170 ♦ FAX: 609-984-7513

<https://www.nationalrep.org>

MONDAY, APRIL 20 <sup>th</sup> , 2026					
0700-1800	<b>CONFERENCE REGISTRATION OPEN</b> <i>NOTE: Attendees must be registered for the Conference – no exceptions</i>				
<b>COFFEE &amp; BEVERAGES</b>					
0800 – 1200  Break from 1015-1045	<b>Training 1:</b>  <b>Exploring Ingestion Pathway Considerations Across Radiological Response Scenarios: ROSS Training</b>  <i>Angela Leek-Quantum Radiation Solutions</i> <i>William Irwin-Vermont Department of Health</i>  <i>Wendy Renno-Radiation Emergency Services</i> <i>Brendan Palmer-Chainbridge Technologies</i>  Cottonwood 2	<b>Training 2:</b>  <b>FRMAC Coordination</b>  <i>Jeff Kowalczyk-DOE/NNSA</i> <i>Bill Beal- Remote Sensing Lab Mark</i> <i>Norsworthy-Remote Sensing Lab</i> <i>Brian Hunt – Sandia National Lab</i> <i>Sean Fournier-Sandia National Lab</i> <i>RaJah Mena-Remote Sensing Lab</i> Cottonwood 1	<b>Training 3:</b>  <b>URI Training</b>  <i>Rebecca Van Valey-Constellation</i> <i>Meagan Robinson-Structural Integrity Associates, Inc</i>  Juniper	<b>Training 5:</b>  <b>Updated Emergency Preparedness Fundamentals/Hostile Action Based Training- On site focus</b> <i>Eric Schrader</i> <i>Nuclear Regulatory Commission</i>  Hawthorne 1-2	<b>Training 7:</b>  <b>Full day tour to Wolf Creek NPP</b>         Meeting location at Sheraton TBD
1300 – 1700  Break from 1445-1515			<b>Training 4:</b>  <b>EP Fundamentals-Off site focus</b>  <i>Eric White</i> <i>Duke Energy</i>  Hawthorne 1-2	<b>Training 6:</b>  <b>How to Develop an Animal Decontamination Training Program and a Standard Operating Procedure</b>  <i>Jess Penn</i> <i>Kansas Division of Emergency Management</i> Cottonwood 3	
1000 – 1200	<b>VENDOR BOOTH SETUP- Leatherwood Ballroom</b> <i>NOTE: All exhibits and related equipment MUST BE REMOVED by 1900 hrs. on Wednesday, April 22<sup>nd</sup>, 2026</i>				
1200 – 1730	<b>VENDOR BOOTHS OPEN FOR CONFERENCE - Leatherwood Ballroom</b>				



# National Radiological Emergency Preparedness Conference, Inc.

PO Box 166, Landing, NJ 07850 ♦ Ph: 973-960-6170 ♦ FAX: 609-984-7513

<https://www.nationalrep.org>

TUESDAY, APRIL 21st, 2026			
0700 – 1800	CONFERENCE REGISTRATION OPEN		
0800 – 0900	COFFEE & BEVERAGES – VENDOR BOOTHS OPEN –		
0900 – 0930	<p><b>Color Guard &amp; the National Anthem-</b></p> <p><b>Opening Remarks</b> – <i>Meagan Robinson, Chair, Conference Steering Committee</i></p> <p><b>Welcoming Remarks-</b> <i>Governor Laura Kelly, or designee</i></p> <p><b>Sponsor Recognition</b> – <i>Samantha Caldwell, Conference Steering Committee</i></p> <p><i>All General Sessions will be in the Cottonwood Ballroom</i></p>		
0930 – 1015	<p><b>Session 1</b></p> <p><b>From Readiness to Resilience: Preparing for the Future of Nuclear Energy</b></p> <p style="text-align: center;"><i>Jaime McCoy</i></p> <p style="text-align: center;">Site Vice President- Wolf Creek Generating Station</p> <p style="text-align: center;"><i>Cottonwood Ballroom</i></p>		
1015 - 1045	BREAK – VENDOR BOOTHS OPEN-		
1045 - 1100	<p><b>Session 2</b></p> <p><b>CVENT Orientation</b></p> <p style="text-align: center;"><i>Aimee Phillips</i></p> <p style="text-align: center;"><i>Wayne County Emergency Management</i></p> <p style="text-align: center;"><i>Cottonwood Ballroom</i></p>		
1100 - 1145	<p><b>Session 3</b></p> <p><b>The NRC’s Preparations for New Technology Deployment and What It Means to REPP Communities</b></p> <p style="text-align: center;"><i>Kevin Williams</i></p> <p style="text-align: center;"><i>Nuclear Regulatory Commission</i></p> <p style="text-align: center;"><i>Cottonwood Ballroom</i></p>		
1145 - 1200	<p><b>Session 4</b></p> <p><b>NRC Federal Updates:</b></p> <p><b>Advancing Emergency Preparedness for a Changing Nuclear Landscape</b></p> <p style="text-align: center;"><i>Cindy Rosales-Cooper</i></p> <p style="text-align: center;"><i>Nuclear Regulatory Commission</i></p> <p style="text-align: center;"><i>Cottonwood Ballroom</i></p>		
12:00-12:15	<p><b>Session 5</b></p> <p><b>Department of Energy Update</b></p> <p style="text-align: center;"><i>Cottonwood Ballroom</i></p>		
1215 – 1330	LUNCH ON YOUR OWN-		
1330 - 1410	<p><b>Session 6</b></p> <p><b>Tribal Engagement</b></p> <p style="text-align: center;"><i>Greg Gothard</i></p> <p style="text-align: center;"><i>Michigan Department of Environment, Great Lakes, and Energy</i></p> <p style="text-align: center;"><i>Cottonwood 1</i></p>	<p><b>Session 7</b></p> <p><b>The Palisades Restart: A World of Government, Civilian, and Private Collaboration</b></p> <p style="text-align: center;"><i>Tom McGowan</i></p> <p style="text-align: center;"><i>Hawthorne 1-2</i></p>	<p><b>Session 8</b></p> <p><b>The MACCS Nuclear Power Plan Accident Consequence System</b></p> <p style="text-align: center;"><i>John Fulton</i></p> <p style="text-align: center;"><i>Sandia National Laboratories</i></p> <p style="text-align: center;"><i>Cottonwood Ballroom</i></p>
1410-1415	TRAVEL TO NEXT SESSION		

# National Radiological Emergency Preparedness Conference, Inc.

PO Box 166, Landing, NJ 07850 ♦ Ph: 973-960-6170 ♦ FAX: 609-984-7513

<https://www.nationalrep.org>

1415 - 1500	<b>Session 9</b> <b>ANI Emergency Response Program: Exercise and Participation with Cobalt Magnet 2025</b> <i>Dan DeMerchant</i> <i>American Nuclear Insurers</i>  <i>Cottonwood 1</i>	<b>Session 10</b> <b>URI Overview</b> <i>Rebecca Van Valey-Constellation</i>  <i>Hawthorne 1-2</i>	<b>Session 11</b> <b>US Nuclear History/ What ended up on the edit floor of the movie Oppenheimer's movie</b> <i>Martin A. Vigil</i> <i>Bardo Wright Crisis &amp; Disaster Management</i>  <i>Cottonwood Ballroom</i>
1500 – 1530	<b>BREAK – VENDOR BOOTHS OPEN-</b>		
1530 - 1610	<b>Session 12</b> <b>Magnetic Power: Media Engagement in CM25</b> <i>Brett Hansard</i> <i>Argonne National Laboratory</i>  <i>Cottonwood 1</i>	<b>Session 13</b> <b>Sheltering and evacuation after a radiation emergency: best practices for applying the PAGs</b> <i>Caitlin Gould</i> <i>Brittany Kiessling</i> <i>Environmental Protection Agency</i>  <i>Hawthorne 1-2</i>	<b>Session 14</b> <b>Emergency Preparedness for Advanced Reactors</b> <i>Cindy Rosales-Cooper</i> <i>Nuclear Regulatory Commission</i>  <i>Cottonwood Ballroom</i>
1610-1615	<b>TRAVEL TO NEXT SESSION</b>		
1615 – 1700	<b>Session 15</b> <b>Media Relations Strategy 2026</b> <i>Lauri Freking</i> <i>Wixted &amp; Company</i> <i>Cottonwood Ballroom</i>		
0700 - 1800	<b>VENDOR BOOTHS OPEN- Leatherwood Ballroom</b>		
1800 – 2100	<b>NREP NETWORKING SOCIAL</b>		
<b>WEDNESDAY, APRIL 22<sup>nd</sup>, 2026</b>			
0700 – 1800	<b>CONFERENCE REGISTRATION OPEN</b>		
0700 – 0800	<b>COFFEE &amp; BEVERAGES – VENDOR BOOTHS OPEN- Leatherwood Ballroom</b>		
0800 – 0850	<b>Session 16</b> <b>Pivot and ADVANCE: The US NRC's Evolving National and Regional Approach to Emergency Preparedness Collaboration</b> <i>Dwayne Myal</i> <i>Douglas Tift</i> <i>Keion Henry</i> <i>Tom McGowan</i> <i>Ryan Alexander</i> <i>Nuclear Regulatory Commission</i> <i>Cottonwood 1</i>	<b>Session 17</b> <b>Restoring the Emergency Plan for the Crane Clean Energy Center from a Licensee and Offsite Perspective</b> <i>Joseph DeBoer</i> <i>Constellation Energy</i> <i>Sara Schmidt</i> <i>Constellation Energy</i>  <i>Hawthorne 1-2</i>	<b>Session 18</b> <b>Break What's Not Broken: Challenging Assumptions to Build the Future of REP</b> <i>Josh Hodge</i> <i>Wake County Emergency Management</i>  <i>Cottonwood Ballroom</i>
0850 – 0855	<b>TRAVEL TO NEXT SESSION</b>		
0855 – 0945	<b>Session 19</b> <b>Part I: Make Your Message Stick: Break Through the Noise</b> <i>Eric Singer</i> <i>4Comm</i>	<b>Session 17 (repeat)</b> <b>Restoring the Emergency Plan for the Crane Clean Energy Center from a Licensee and Offsite Perspective.</b> <i>Joseph DeBoer</i> <i>Constellation Energy</i> <i>Sara Schmidt</i> <i>Constellation Energy</i>	<b>Session 20</b> <b>Lessons Learned from the Complex Out of Sequence Events in Tennessee</b> <i>Kevin Petty- Tennessee Emergency Management Agency</i> <i>Robert Goff-Tennessee Department of Health</i>

# National Radiological Emergency Preparedness Conference, Inc.

PO Box 166, Landing, NJ 07850 ♦ Ph: 973-960-6170 ♦ FAX: 609-984-7513

<https://www.nationalrep.org>

	<i>Cottonwood 1</i>	<i>Hawthorne 1-2</i>	<i>Cottonwood Ballroom</i>
0945 – 1015	<b>BREAK – VENDOR BOOTHS OPEN- <i>Leatherwood Ballroom</i></b>		
1015 – 1105	<b>Session 21</b>  <b>Part II: Make Your Message Stick: Break Through the Noise</b> <i>Eric Singer</i> <i>4Comm</i>  <i>Cottonwood 1</i>	<b>Session 22</b>  <b>Safeguarding Drinking Water in Radiological Emergencies: Lessons from Minnesota’s Progressive Tabletop Exercise</b> <i>Amy Hass</i> <i>Minnesota Department of Health</i>  <i>Hawthorne 1-2</i>	<b>Session 23</b>  <b>Modernization of FRMAC Information Products</b> <i>Bill Beal</i> <i>NNSS Remote Sensing Laboratory</i>  <i>Cottonwood Ballroom</i>
1105 – 1110	<b>TRAVEL TO NEXT SESSION</b>		
1110 – 1200	<b>Session 24</b>  <b>Dock and Decontaminate: Coordinating Evacuees by Water During a Radiological Response</b> <i>Shayna Olbrych</i> <i>Vince Kalson-</i> <i>Florida Division of Emergency Management</i> <i>Daniel Scarborough-Miami Dade County Department of Emergency Management</i>  <i>Cottonwood 1</i>	<b>Session 25</b>  <b>Update on the Conference of Radiation Control Program Directors (CRCPD) Efforts to Re-energize the Radiation Response Volunteer Corps</b> <i>Adela Salame-Alfie</i> <i>NuRaC, LLC</i>  <i>Hawthorne 1-2</i>	<b>Session 26</b>  <b>Tribal Engagement</b> <i>Greg Gothard</i> <i>Michigan Department of Environment, Great Lakes, and Energy</i>  <i>Cottonwood Ballroom</i>
1200 – 1330	<b>LUNCH ON YOUR OWN</b>		
1330 – 1420	<b>Session 27</b>  <b>Virtual Reality Scenarios for Transport Emergency Response Training</b> <i>Yung Liu</i> <i>Paul Gelautz</i> <i>Brian Craig</i> <i>Argonne National Laboratory</i>  <i>Cottonwood 1</i>	<b>Session 28</b>  <b>Operational Planning to Ship a Rail-Sized Cask of Commercial Spent Nuclear Fuel</b> <i>Erica Bickford-</i> <i>Sara Hogan-</i> <i>U.S. Department of Energy</i> <i>Kevin Connolly-Oak Ridge National Laboratory</i> <i>Miriam Juckett-Pacific Northwest National Laboratory</i>  <i>Hawthorne 1-2</i>	<b>Session 29</b>  <b>Planning and Coordination for Radiation/Nuclear Incidents Affecting Multiple States</b> <i>Wendy Renno-Radiation Emergency Services</i> <i>Angela Leek-Quantum Radiation Solutions</i> <i>William Irwin-Vermont Dept of Health</i> <i>Charles Adams-Wisconsin Department of Health Services- Radiation Protection Section</i> <i>Tanya Ridgle- LA County Public Health</i> <i>Shay Christian- Texas</i>  <i>Cottonwood Ballroom</i>
1420 – 1425	<b>TRAVEL TO NEXT SESSION</b>		
1425 - 1515	<b>Session 30</b>  <b>Historical Perspectives to Inform Modern Planning for Radiological Emergencies</b> <i>Nicholas Studer</i> <i>National Museum of Civil Defense</i>	<b>Session 31</b>  <b>Ready to Ship: Communication and Outreach to Tribes and States along a Spent Nuclear Fuel Transportation Route</b> <i>Sara Hogan</i> <i>U.S. Department of Energy</i> <i>Miriam Juckett</i> <i>Pacific Northwest National Laboratory</i>	<b>Session 29 (Repeat)</b>  <b>Planning and Coordination for Radiation/Nuclear Incidents Affecting Multiple States</b> <i>Wendy Renno-Radiation Emergency Services</i> <i>Angela Leek-Quantum Radiation Solutions</i> <i>William Irwin-Vermont Dept of Health</i>

# National Radiological Emergency Preparedness Conference, Inc.

PO Box 166, Landing, NJ 07850 ♦ Ph: 973-960-6170 ♦ FAX: 609-984-7513

<https://www.nationalrep.org>

	<i>Cottonwood 1</i>	<i>Hawthorne 1-2</i>	<i>Charles Adams-Wisconsin Department of Health Services- Radiation Protection Section Tanya Ridgle- LA County Public Health Shay Christian- Texas  Cottonwood Ballroom</i>
1515 - 1545	<b>BREAK – VENDOR BOOTHS OPEN-</b> <i>Leatherwood Ballroom</i> <b>NOTE: Vendor booths will close at the conclusion of this break</b>		
1545 - 1635	<b>Session 33</b>  <b>Proposed Improvement to the Community Reception Center Process Flow</b> <i>Sherwin Levinson Adela Salame-Alfie</i>  <i>Cottonwood 1</i>	<b>Session 34</b>  <b>The Facilitation Factor: Engineering Training into an Impactful Game</b> <i>Jamie Penza Charles Adams- Wisconsin DHS Jamie Penza-Waukesha County PHHS Russell Bauer-Wisconsin Emergency Management-REP Tracy Nollenberg- Kewaunee County Emergency Management Robert Goff-Tennessee Department of Health Wisconsin/Tennessee Hawthorne 1-2</i>	<b>Session 35</b>  <b>How to Conduct Radiation Training for Non-Radiation Workers</b> <i>Aimee Phillips Wayne County Emergency Managemen</i>  <i>Cottonwood Ballroom</i>
<b>EVENING ON YOUR OWN</b>			
<b>THURSDAY, APRIL 23<sup>rd</sup>, 2026</b>			
0700 – 0800	<b>COFFEE &amp; BEVERAGES-</b>		
0800 – 0845	<b>Session 36</b>  <b>Resiliency in Emergency Management</b> <i>Brian Payne with Jelly Roll (Crisis Canine) Scott County Emergency Management</i>  <i>Cottonwood Ballroom</i>		
0845 - 0900	<b>Session 37</b>  <b>Nuclear Energy Institute Update</b> <i>Susan Perkins and Sean Zalesny-Nuclear Energy Institute</i>  <i>Cottonwood Ballroom</i>		
0900-0915	<b>Session 38</b>  <b>US Environmental Protection Agency Update</b>  <i>Cottonwood Ballroom</i>		
0915-0930	<b>Session 39</b>  <b>Conference of Radiation Control Program Directors Update</b>  <i>Cottonwood Ballroom</i>		
0945 – 1015	<b>BREAK</b>		

# National Radiological Emergency Preparedness Conference, Inc.

PO Box 166, Landing, NJ 07850 ♦ Ph: 973-960-6170 ♦ FAX: 609-984-7513

<https://www.nationalrep.org>

1015 – 1100	<b>Session 40</b>  <b>Integrated Excellence: The Partnership of Wolf Creek, KDEM, KDHE and Coffey County</b> <i>Renee Lucas</i> <i>Mark Ungerer</i> <i>Jason Meinholdt</i> <i>Jess Penn</i> <i>-Kansas Department of Health &amp; Environment</i>  <i>Clint Garland</i> <i>Amber Presley</i> <i>- Wolf Creek Nuclear Power Plant</i> <i>Cottonwood 1</i>	<b>Session 41</b>  <b>Slow and Steady Wins the Race – Ongoing Training Efforts for NJ’s Emergency Response Community</b> <i>Nancy Stanley</i> <i>New Jersey Department of Environmental Protection</i>  <i>Hawthorne 1-2</i>	<b>Session 35 (Repeat)</b>  <b>How to Conduct Radiation Training for Non-Radiation Workers</b> <i>Aimee Phillips</i> <i>Wayne County Emergency Management</i>  <i>Cottonwood Ballroom</i>
1100 - 1105	<b>TRAVEL TO NEXT SESSION</b>		
1105 - 1150	<b>Session 43</b>  <b>Scenario-Based Radiological Spiked Samples for Consequence Management Exercises</b> <i>Sean Fournier</i> <i>Erik Nielsen</i> <i>Sandia National Laboratories</i>  <i>Cottonwood 1</i>	<b>Session 41 (Repeat)</b>  <b>REPEAT: Slow and Steady Wins the Race – Ongoing Training Efforts for NJ’s Emergency Response Community</b> <i>Nancy Stanley</i> <i>New Jersey Department of Environmental Protection</i>  <i>Hawthorne 1-2</i>	<b>Session 44</b>  <b>Old Dogs Can Learn New Tricks – Recommissioning Nuclear Reactors 101</b> <i>Kayla Beckerdite-Iowa Homeland Security</i> <i>Emergency Management</i> <i>Patty Riesberg-Iowa HHS, Bureau of Radiological Health</i> <i>Denny Smith-NextEra Energy</i>  <i>Cottonwood Ballroom</i>
1150 – 1300	<b>LUNCH ON YOUR OWN</b>		
1300 - 1345	<b>Session 45</b>  <b>Medical Response Management for Nuclear Detonation using Injury Category Geographic Distribution Estimations</b> <i>Dr. Cham Edwards Dallas-University of Georgia, College of Public Health</i> <i>William Bell- University of Georgia, College of Public Health</i>  <i>Cottonwood Ballroom</i>		
1345 – 1425	<b>Session 46</b>  <b>Grid Resiliency: Keeping the Lights On</b> <i>Ben Bolton</i> <i>Tennessee Department of Environment and Conservation</i>  <i>Cottonwood Ballroom</i>		
1425 - 1455	<b>BREAK</b>		
1455 - 1545	<b>Session 47</b>  <b>Maximizing Investment: Leveraging Fixed-Facility REP Training to Drive All-Hazards Radiological Preparedness</b> <i>Meghan Hutchinson-</i> <i>The Olson Group, LTD.</i> <i>Steve Sugarman-</i> <i>Mirion Technologies</i>  <i>Cottonwood Ballroom</i>		
1545 – 1600	<b>Closing Remarks &amp; Announcement of Next Year's Conference</b>		
1600	<b>2026 CONFERENCE CONCLUDES</b>		